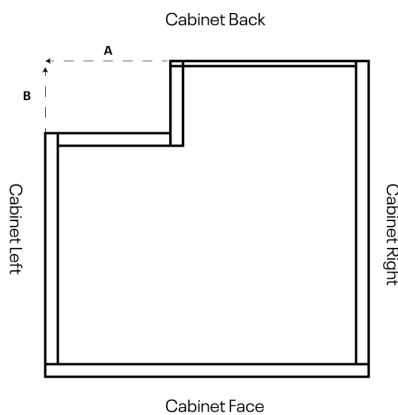


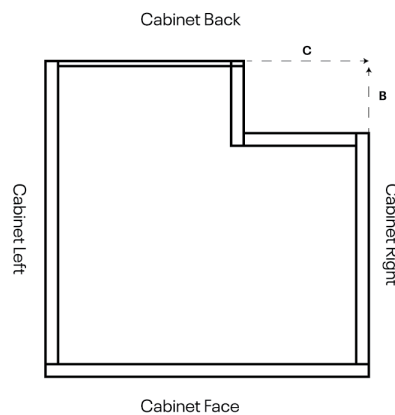
Vertical Pipe Chase Modification Form

Pipe Chase modification allows a two or three sided vertical notch to be cut into the back of a wall, base, tall or vanity cabinet.

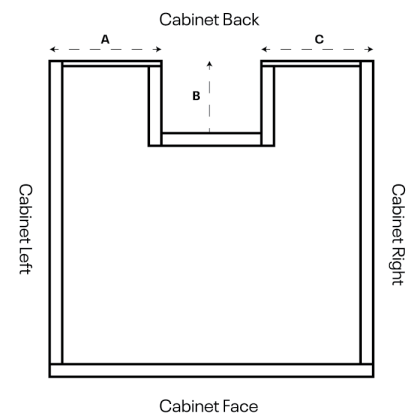
Example: Left Notch (Top View)



Example: Right Notch (Top View)



Example: Center Notch (Top View)



Company Code:

PO#:

Email:

Quote Number:

Sales Order Number:

Item Code:

Cabinet Size:

Select Notch Type:

☐ Two-Sided Notch

☐ Three-Sided Notch

Two-Sided Notch Pipe Chase Dimensions (if Two-sided is selected):

Left/Right Notch:

☐ Left (If left, A=0)

☐ Right (If right, C=0)

A:

Dimension A (Minimum 2") :

B:

Dimension B (Minimum 2", Maximum 4" from front of cabinet):

Three-sided Notch (Center):

A:

Dimension A (Minimum 2") :

B:

Dimension B (Minimum 2", Maximum 4" from front of cabinet):

C:

Dimension C (Minimum 2") :

Notes:

*If "Chase" interferes with functional drawers, drawers will be reduced in depth to 12"/15"/18" as it fits into reduced depth cabinet.

**Cut outs for corner cabinets require customer drawings